



MONTHLY MEMBERSHIP PROGRESS REPORT

Results as of: 2/29/2016

Multiple District 3

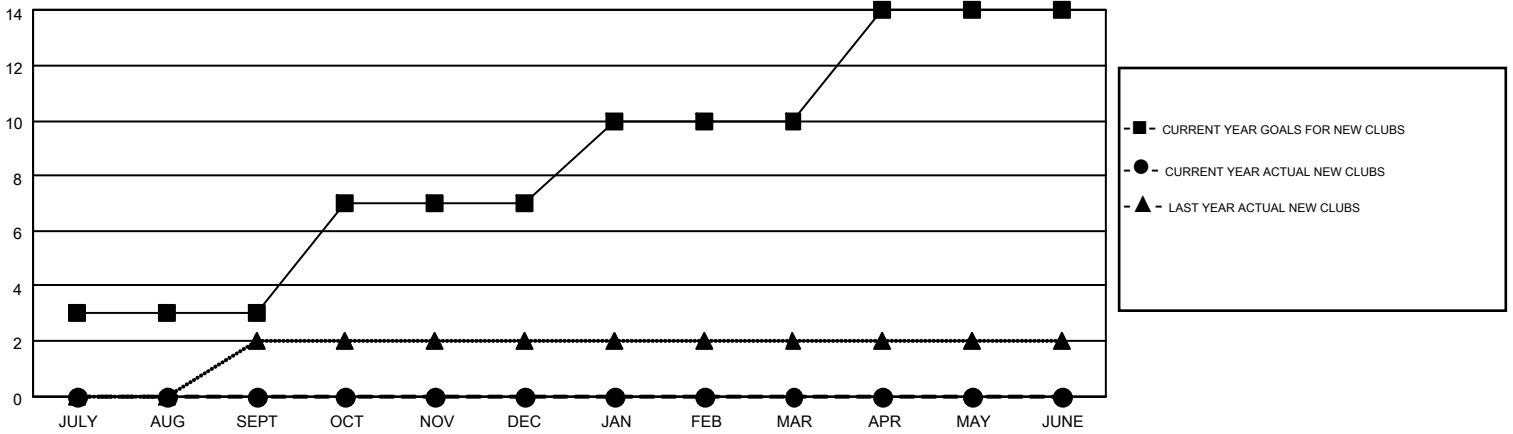
LOCATION: OKLAHOMA

GMT: HAL GRIFFIN

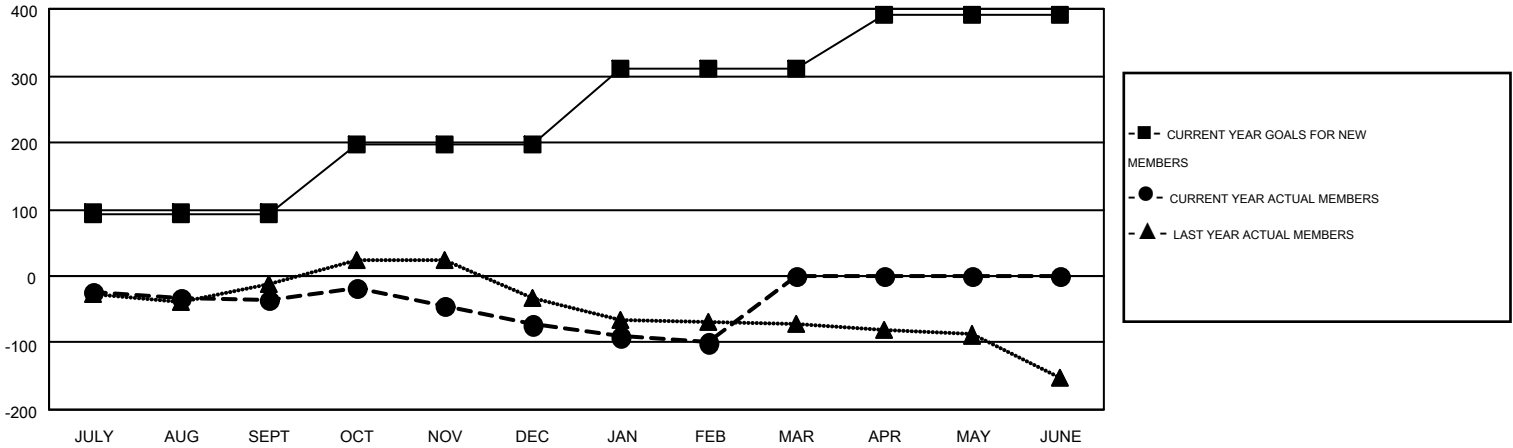
GMT CA 1

| Clubs | | | | | Members | | | | |
|-----------------------|---------------|-----------|---------------|---------------|-----------------------|-----------------|-------------------------------|-----------------|---------------|
| RESULTS FOR 2015-2016 | | | | | RESULTS FOR 2015-2016 | | | | |
| QUARTER | NEW CLUB GOAL | NEW CLUBS | DROPPED CLUBS | NET GAIN/LOSS | QUARTER | NEW MEMBER GOAL | CHARTER AND NEW MEMBERS ADDED | DROPPED MEMBERS | NET GAIN/LOSS |
| JULY/AUG/SEPT | 3 | 0 | 0 | 0 | JULY/AUG/SEPT | 94 | 92 | 128 | -36 |
| OCT/NOV/DEC | 4 | 0 | 2 | -2 | OCT/NOV/DEC | 103 | 98 | 135 | -37 |
| JAN/FEB/MAR | 3 | 0 | 0 | 0 | JAN/FEB/MAR | 114 | 66 | 93 | -27 |
| APR/MAY/JUNE | 4 | 0 | 0 | 0 | APR/MAY/JUNE | 81 | 0 | 0 | 0 |

GOALS AND ACTUAL NEW CLUBS CUMULATIVE



GOALS AND ACTUAL MEMBERS CUMULATIVE



| | | | |
|------------------------|---|----------------------------------|----------------|
| DROPPED CLUBS: 2 | 89 CLUBS OF 170 ADDED 1 OR MORE NEW MEMBERS | <u>GENDER DISTRIBUTION</u> | |
| | | MALE | 3,025 (70.76%) |
| | | FEMALE | 1,250 (29.24%) |
| <u>DROPPED MEMBERS</u> | | <u>FAMILY UNIT MEMBERS</u> 635 | |
| DECEASED | 41 | <u>HEAD OF HOUSEHOLD</u> 311 | |
| CLUB CANCELLED | 25 | <u>NON-HEAD OF HOUSEHOLD</u> 324 | |
| OTHER | 290 | | |
| TOTAL | 356 | | |

[CLICK HERE FOR HEALTH ASSESSMENT DATA](#)